



# Guyra Gazette

Wednesday April 22, 2020

Circulation `1680

P: 6779 2132

E: news@gala.org.au, advertising@gala.org.au

www.guyragazette.com.au

## New cafe open for business

Opening a new business the week before restrictions were placed on social gatherings due to coronavirus, may not have been the best timing. While it has been a minor setback for Chris Gellie and her son Jack at the newly opened Woolly Lamb Café, they remain upbeat and are looking forward to a time when life gets back to some sort of normality.

In the meantime, they are taking the opportunity to get procedures in place that will let them fulfil their dream of serving the Guyra community and travellers with tasty treats, fine coffee, relaxed dining and great service.

The Woolly Lamb Café is something a little bit different for Guyra. Located on the highway in the former Rafter's Restaurant building it is a plant based café serving coffee and food, as well as potted plants, fresh flowers and giftware.

Chris, who was looking for a new challenge, recognised the building as an opportunity waiting to happen.

"I had been looking at it for a while and enquired about renting some space from the previous owners," Chris said. "It is a great position but I could see



Mother and son team Chris and Jack Gellie have faced unexpected challenges since opening the Woolly Lamb Cafe in March

that it needed to be refreshed, so instead I decided to buy the building and give it a new look."

"We both wanted to create an organic environment and felt that the building needed to be streamlined and lightened up to make it more inviting," she said. "We also recognised the need for customer comfort during all seasons and have in-

stalled air conditioning for cooling in summer and heating in winter."

Due to current restrictions the new tables and chair are stacked up inside and they are serving takeaway meals only. When things return to normal they will have three different spaces for customers to enjoy – the inside room for functions and meetings, the main café

space for everyday dining and deck chairs and tables with umbrellas outside. There is also a range of indoor plants and fresh flowers for sale.

Current opening hours are 8am until 4pm Thursday to Monday and 8am until 2pm on weekends. They are offering a simplified menu suitable to grab and go with your coffee. Fresh baked goodies are being made in store with Chris and Jack sharing the cooking duties.

While the chairs are packed up for the time being, you will find a large table full of donated goods which are free to take. This is an extension of CWA drought aid which was running prior to Christmas and allows easy access in a central location for those who may need something extra. They have also been heartened by the generosity of their customers who are paying it forward by donating cups of coffee for health care workers.

"We are looking forward to coronavirus restrictions ending," Chris said. "I think when this is over people will be wanting to get out and enjoy the company of others - it may be a while but everyone is looking forward to that."

**We will be closed this Saturday,  
25<sup>th</sup> April**



**Smart Burn**

**\$52.25**

**Soot Loose**

**\$4.50**

**HOME**  
TIMBER & HARDWARE  
WHERE THE TRADIES GO

**Dasha's Hardware & Building Supplies**

61 Ollera Street, Guyra

Phone: 6779 2444

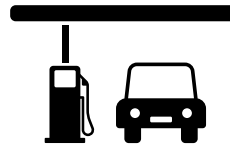
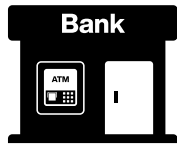


Australian Government

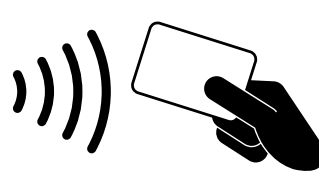
OFFICIAL MEDICAL ADVICE

# Coronavirus: You must take action to save lives in your community.

Stay at home unless absolutely necessary. Banks, supermarkets/groceries, petrol stations, medical services and suppliers will remain open. You must avoid non-essential travel.



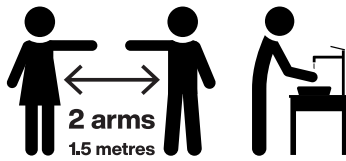
If you can, work from home. Use phones for meetings and stop handshaking. Tap to pay where possible instead of using cash.



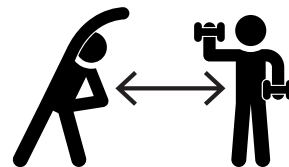
Gatherings of 2 people max are being enforced, with the exception of households, work and education.



You must stay 2 arms lengths away from others and wash your hands for 20 seconds.



Exercise away from others.



Download the App  
Visit [australia.gov.au](http://australia.gov.au)

Authorised by the Australian Government, Canberra



CUT OUT AND KEEP

# Council takes action on feral cats

A significant rise in the population of feral cats and a spike of complaints in the Guyra district has prompted Armidale Regional Council to take action. It will by implement a feral and stray cat trapping program over the coming months aimed at controlling the increasing numbers.

Cat owners are reminded to ensure their feline friends are identifiable via microchip and/or a collar and tag to enable the owner to be traced in accordance with Section 29 of the Companions Animal Act.

Team Leader – Ranger Services, Ian Chetcuti said he is eager to ensure the program runs smoothly and is appealing for owners to check their cat's registration details are current, including residential details.

Mr Chetcuti said that rangers follow strict protocols with cats to certify their registration, so they can be easily identified and returned to their owners. The protocols also minimise other issues as-



Armidale Regional Council Ranger Richard Mayled

sociated with lost and stray animals.

As determined by the Companion Animals Act, unidentified cats will be housed at Council's impounding facility and held for seven days. If the cat is not claimed, it may be rehomed. Cats determined by an

authorised officer or Veterinarian to be feral, will be humanely euthanased.

Feral cats have long been recognised as a major problem to Australia's delicate biodiversity and are key contributors to the extinction of native mammals and birds. Feral cats

are of the same species as domestic cats, however, they live in the wild and hunt their prey to survive.

For further information on this program please contact Council's Rangers on 1300 136 833 during normal office hours.

## COVID-19 Pandemic - No excuse for Domestic Violence

Domestic violence is a crime and the fact that it occurs during a declared pandemic is irrelevant.

The COVID-19 pandemic will never be an excuse for incidents of domestic violence, and police will continue to exercise zero tolerance for domestic violence. Perpetrators will continue to be targeted and monitored, and support will continue to be given to victims. Police remind the community that everyone has a responsibility to report domestic violence.

During the pandemic police will continue to complete Apprehended Domestic Violence Order (ADVO) Compliance Checks as normal. If police are of the view that defendants should be removed

from their residence to ensure the safety of victims and their children, they will remove the offenders using their powers of arrest and/or imposing appropriate ADVO conditions. This will not change during the pandemic.

Police are closely monitoring the rates of domestic violence offending, and have the ability to immediately increase the protective conditions of an existing ADVO and will do so if required. The new legislation allows an extension of the length of a provisional ADVO from 28 days up to a maximum of six months when required.

Contact numbers for assistance: 1800RESPECT or Armidale Police Station on 02 6771 0699.

## Good fences make for good neighbours

NSW Farmers has welcomed the 'Supporting our Neighbours' announcement which will see \$209 million dedicated to help bushfire affected farmers bordering public lands rebuild their boundary fences, as part of the State's COVID-19 stimulus package. Under the project the Government will cover \$5,000 per kilometre to rebuild existing fences that adjoin public land damaged by the recent bushfires.

NSW Farmers President James Jackson said the 2019/20 bushfires had a devastating impact on critical on-farm infrastructure, especially fencing.

"The fires destroyed thousands of kilometres of fences making it very challenging to contain livestock, exclude pests and effectively manage biosecurity risks," Mr Jackson said.

"With so many boundary fences burnt, wild dogs and other pests are able to travel across public

and private lands and that is having a destructive impact on farmers' productivity and livelihoods."

Mr Jackson said the announcement was of significant help for producers, and the funding would provide much needed economic activity and employment opportunities in the recovering regional communities.

"The grants will go a long way towards covering standard fencing costs, however a standard post and wire fence will not stop dogs, kangaroos and feral cats."

"To protect farmland from predation now and into the future we urge the NSW government to consider increasing the grant to \$10,000."

NSW Farmers would like to see the Government follow the good neighbor principle for all repairs and replacements of fences between crown land, including national parks, and private property beyond the COVID-19 recovery.

## What's HOT

**THE** mountain is rumbling – hopefully it means a big weather event is coming our way

**THANK YOU** to the young lady who purchased hand sanitiser and gave it away – kindness comes from unexpected sources.

**LANEWAY** gardening

**LOVE** the Gazette? Why not advertise to show your support, or drop us a line to let us know what you want us to include

**READERS** picking up mistakes

## What's NOT

**NOT** being given a receipt at IGA

**NOISY** lawnmowers

## QUOTE of the week

**Gardening adds years to your life and life to your years**

**Bureau of Meteorology**

## Weather

### WATCH

Guyra MPS

Date	Day	Min	Max	Rain
14	Tues	6.9	19.4	0
15	Wed	7.3	21.4	0
16	Thurs	8.6	19.1	0
17	Fri	11.9	21.9	0
18	Sat	8.0	18.2	0
19	Sun	4.2	16.0	0
20	Mon	2.4	17.0	0

Rain this week	0.0 mm
Apr. rainfall	46.6 mm
Rainfall YTD	428.6 mm
Rainfall last YTD	160.0 mm
Ave. rain to April	349.4mm

Information supplied by Jeff Martin, Observer for Bureau of Meteorology

# FROM THE ARCHIVES - Guyra Post Office

Guyra Argus  
3rd September 1902.

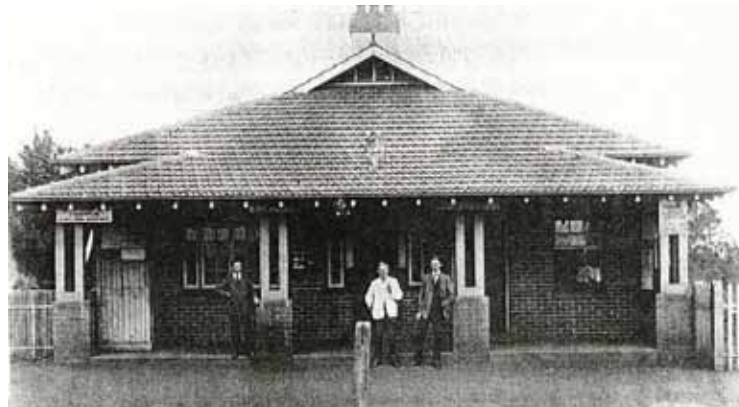
*"In a recent issues we drew attention to the inadequate accommodation afforded at the local post office, and suggested that a new premises be erected for post and telegraph office, independent of the railway department altogether. This question was referred to Mr Curtis at the Progress Association meeting on Monday night, that gentlemen suggesting that the present premises be enlarged. Mr Sole, however, backed up our suggestion when he advocated for the erection of a new post and telegraph office in a central position. This gentleman was supported by Mr Lackey, who stated, quite truthfully too, that the receiving office at North-Guyra was also far too small for present requirements; they had a so-called post office at each end of the town, and virtually they had none at all. We hope to see this matter pushed on now that it has been mooted."*

Prior to the arrival of the railway, a settlement had grown east of the present town site on the great northern road in the valley east of the Guyra Cemetery. It had a general store, a public house, a butcher shop and a blacksmith, all under the proprietorship of Mr William Millis. Since about 1865, Mr Millis had operated a private mail service for farmers in the district and the postmaster of Armidale reported that Guyra was "about six miles from Falconer and twenty miles from Armidale. Cobb and Co Coaches travel the road three times a week and pass the house where Mr Millis lives"

With the arrival of the Railway in 1884 the Post Office was transferred to the Railway Station.



Post Office 1909 opposite Guyra Shire Council Chambers.



Post Office 1914

Mrs Henrietta Garrahy opened an unofficial post office at North Guyra in 1902, in a small wooden building next to the Argus office in Ollera Street. In 1907, when the removal of the Post Office from the railway station was being considered, there was quite a deal of rivalry between South Guyra and North Guyra, both settlements claiming to be the best site for the post office. At this time North Guyra, on the western side of the railway line, had a population of 230. South Guyra, directly opposite the railway station to the east and about 1½ miles from North Guyra, had 130 residents, but was considered the more progressive township

After much discussion a site was chosen midway between the two centres, and on 10th April 1909, Guyra Post Office was opened in a building rented from Mrs Jane Izzard for £70 (\$140) per annum. This was in Bradley Street opposite the Guyra Shire Council Chambers Building.

The North Guyra Post Office and the post office at the railway station were discontinued. The first permanent official postmaster, William Burgess, was appointment in February 1910 with a salary of £235 (\$470) per annum.

The present Post Office building, built by A. Cooper was opened on 20th March 1914

## It's okay to whinge.....Ramblings by the Guyra Ghost.

Recently I commented to a friend that the flags outside the Council office were really sad looking and needed to be renewed. My friend said, "well didn't you mention the matter to anyone who could make a difference". I answered that obviously I hadn't, I just complained to everyone in sight as was my democratic right. After all, shouldn't the appropriate powers be able to read the public mind and do what needed to be done?

As Aussies, we love to whinge. Maybe we should change the moniker, whingeing Pom, to whingeing Aussie. Everyone is an expert and we could all do better

if we were in power. It's just lucky we aren't in power!! It's alright to stand on the sidelines and give advice but if we had to do the job, would we know all the rules and regulations that needed to be followed, all the liability issues that had to be complied with as well as the technical expertise that was necessary. It's easy to say that common sense would tell us what to do, but would it really?

That's why it is so difficult to get anyone to volunteer for any Committee. It's much easier to make snide remarks from the sideline than to get in and get a job done satisfying as many people/organisations in the community while

ensuring that all the appropriate legal requirements are met.

I'm not singling any group out as I'm in the same boat. I would rather help out in the background and do any job under instruction than take on a responsible role where I would be lambasted for not pleasing everyone and doing the job as They think it should be done!

So I think I will continue to volunteer for set tasks and do anything that is asked of me rather than accept a role that requires me to make responsible decisions that are liable to be scrutinised by "members of the public".

## Monitoring bores being installed

Monitoring bores are being installed in Guyra's Yarrowonda Street, as part of a ground water supply system being developed as a back-up to the region's town water supply.

The bores being constructed this week will monitor the water table at around 30 metres and 80 metres below the surface, to check water levels at these depths are not affected by deeper bores installed by Council to supplement the town supply.

At least four monitoring bores are being established at three Guyra sites, with equipment installed at Izzard Park and Oban Street earlier this month.

Their installation coincides with Council's construction of an underground piping and pumping network linking new emergency town water bores to the Guyra Water Treatment Plant.

Three emergency supply bores will be located at Izzard Park, the sports field and Guyra Showground, as one of Council's measures to supplement the region's town supply during the ongoing

drought and to safeguard supplies during future extended dry periods.

The supply bores have been established more than 100 metres below the surface, much deeper than existing bores supplying nearby properties, and measures such as sealing sleeves will be used to further ensure the Council bores do no impact on shallower ground water reserves.

"A hydrologist engaged by Council to recommend bores sites has advised we can be confident the bores will not affect landholders' existing bores," Armidale Regional Council Mayor Simon Murray said.

"The monitoring bores will provide data showing any impact on shallow aquifers following extraction from Council's deeper bores

"They will identify any changes to ground water levels at shallower depths and show if those variations could be linked to extraction by the town supply bores."

Final connection of the emergency bores to Guyra water treatment plant will only proceed if the bore water meets Australian Drinking Water Guidelines and Council is successful in being

granted a Water Access Licence from the NSW Government.

Councillor Murray said while the bores would help extend supplies in the Malpas and Guyra dams, the most effective way to safeguard town supplies was to continue maximising water savings.

Water levels in the region's dams continue to sit at around half their total capacity, following a slight increase from last week's rain, and Level 5 restrictions remain in place for all customer on the network.

## Basic flight service returns

A basic air service to the Armidale region will be reinstated, with the Federal Government underwriting the cost. The decision came after all carriers providing regular passenger services to Armidale Regional Airport suspended their flights earlier this month.

The Department of Infrastructure and Transport has confirmed Armidale will be serviced by Qantas for two flights per week, for a period of eight weeks to begin with.

ARC Mayor Simon Murray said that while it is a long way from the restoration of normal

service at Armidale's Regional Airport the rescue package is welcomed.

"I'd like to acknowledge our Federal Member Barnaby Joyce for his advocacy to help make this happen," Cr Murray said. "Armidale Regional Council will continue to work with Government and carriers to maintain this essential connectivity."

## Council meetings resume online

Armidale Regional Council will hold its first online meeting on Wednesday April 22nd, after face-to-face Ordinary Council meetings were suspended as a measure to prevent the spread of COVID-19. Council has received confirmation this online format for meetings will satisfy the requirements for Local Government meeting protocol. Council cancelled its March meeting to protect the welfare of councillors, staff and members of the community.

Community members will be able to watch the online meetings live on Facebook and Youtube, or view them at a later date. The agenda is available to view on the Council Meetings page of Council's website.

Visit Council's website for further information about meetings and how to provide input.

## Guyra Sheep & Lamb Sale

**April 15th** - A yarding of 1,370 lambs and 500 sheep. A good quality offering of both restocker and lambs to process. Not as much weight as the previous sale. The usual buyers were in attendance with restocker demand very high. Restocker lambs sold to dearer

trends as a result of the high demand, while quality also contributed to higher prices. In some cases there was less weight purchased for equal or more dollars per head.

The best of the lambs to restock reached \$197 with quite a few sell-

ing from \$175 to \$190/head. The plainest of the restocker lambs were as low as \$90, however most sold well in excess of \$120/head. The quality of the lambs to process contributed to higher average prices, however decreases in weight contributed to some lower

prices in a firm to cheaper market trend.

Restockers were active on Merino ewes with that market firm to dearer. Sheep to process sold on a firm to cheaper market trend.

## Armidale Cattle Sale

**April 16th** - There was a yarding of 583 mixed cattle at Armidale, with a larger penning of weaner steers and yearling steers in the majority. There was only limited processors present, due to lack of numbers in the cow offering. There was, however, good demand from feeder and restocker operators.

Light weight steer weaners sold to 540c/kg, however the trend for that category tended to the cheaper side. Conversely the heifer portion sold to dearer trends of 26c, selling to 441c/kg.

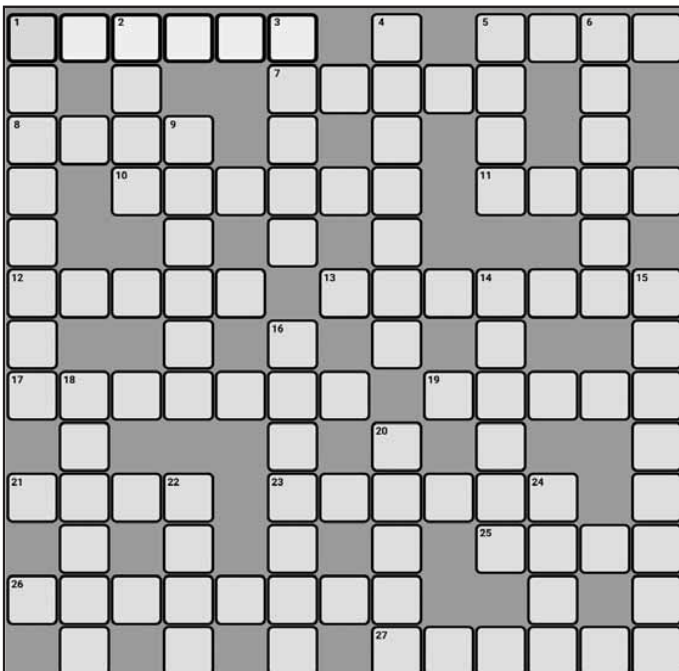
Yearling steers, both light and medium weights sold to dearer trends, the light steers to 474c, the medium drafts to 27c/kg dearer. A limited yearling heifer offering sold to significantly dearer trends.

No grown steers or heifers to quote. Medium weight trade cows saw a cheaper trend of 13c/kg, with limited competition available. Heavy cows eased 15c, however, store cows held value to see a dearer trend of 13c/kg. Bulls in excess of 1,000kg made to 277c/kg.

## Weekly Wool Sales

**April 17th** - It was a small national offering that was presented to the trade this week in what would be under normal circumstances a one week Easter recess. Just over 18,000 bales were offered with 15% of the offering withdrawn prior to sale. Considering the jump in the Aussie dollar against the US the one day sale managed to pick up from where it left off last week with prices quoted as relatively unchanged on the early market report. As the day progressed these levels could not be maintained with the Northern region Indicator closing down 8 cents. Larger losses oc-

curred in the Western region once selling commenced after the Eastern seaboard had closed. Crossbred types and Cardings came under further pressure with these indicators only being propped up by the large percentage of passed in wool in these categories. 13,917 bales were sold nationally for the week with a passed in rate of 23.1%. Major buyers included Lempriere, Tianyu and Seatech with last week's top buyer absent from the major buyer list. Sales return to the Tuesday, Wednesday format next week with 31,500 bales expected to be offered.



### CROSSWORD CLUES

**Across**

1. Shelters from light
5. Large American feline also call a cougar or mountain lion
7. Not late
8. Particle
10. Daily news publications
11. Make changes in text
12. Identifying or descriptive marker attached to an object
13. The force or energy behind something
17. Having an attractive figure
19. Cool down
21. Flip (a coin for example)
23. Mineral such as quartz
25. Hit swiftly with a violent blow
26. Having an unknown or unnamed source

27. Message communicated to God

**Down**

1. Condition of great disorder
2. At the summit of
3. Number considered by some to be lucky
4. Suppose
5. Funeral pile
6. California City famous for celebrity homes
9. Fabricated
14. Moral Principles
15. Sharp bit of wood
16. Adhesive tape used in dressing wounds
18. Victory cheer
20. Embrace
22. Garden building
24. Lopsided

### WORDSEARCH - Weather

L L E W S S E F  
 W M I S T Z A O  
 E N K O E L R G  
 D Y R E L T O T  
 T M R E D W R H  
 R F C D O O U G  
 O I L S O B A U  
 U G O T L N O O  
 G O U E F I K R  
 H M D A D A A D  
 E S Y M P R O H

- Aurora
- Cell
- Cloudy
- Dew
- Drought
- Dry
- Fall
- Flood
- Fog
- Freeze
- Hail
- Ice
- Mist
- Rainbow
- Sky
- Smog
- Steam
- Storm
- Swell
- Trough
- Wind

**Guyra Crossword 8/4**

**Across:** 3. Kolora, 5. Dutton, 7. Bearup, 9. Sandy, 12. Bottom, 14. Potato, 16. New England 17. Tingha **Down:** 1.

Bradley, 2. Costas, 4. Llangothlin, 6. Nincoola, 8. Hydrangea, 10. Ebor, 11. Holden, 13. White, 15. Peat

### SUDOKU - Easy

		8	7		4			
4	5		8	2			3	6
2		3	6			9		
	1	2		8	7			
	9		2		3		5	
			1	4		8	9	
		7			6	3		4
6	4			7	8		2	1
			4		2	6		

**CLASSIFIED AD:** Man with toilet paper seeks women with hand sanitiser to participate in good clean fun

### CROSSWORD CLUES

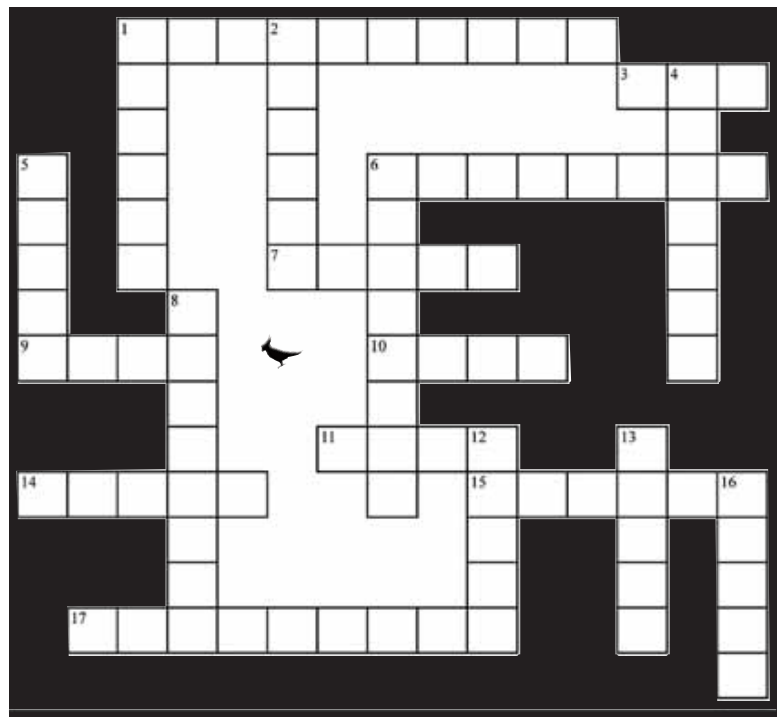
**Across**

1. Where tomatoes grow
3. *I get ample* groceries here
6. Highway south \_\_\_\_\_ St
7. Menswear is his specialty
9. Window smashed in ramraid
10. He made a mistake
11. A gully and a road named for him
14. Street where you can learn a lot
15. Head here for help
17. Angus stud and school

**Down**

1. Rugby team nickname
2. Caravan Park
4. You will find a red lion here
5. These birds have a mother
6. In demand during winter
8. Lamb and spud founder (surname)
12. Library named for him (surname)
13. Little spuds
16. This mountain is dark

**HINT: Local knowledge needed**



**Guyra Crossword 15/4**

**Across:** 1. Chandlers, 4. Vinnies, 6. Water, 7. Elm, 8. MPS, 10. Ryanda, 11. Bowlo, 13. Brisk, 15. ADRA, 17. Cocka-

too, 18. Abercrombie. **Down:** 2. Swans, 3. Pipeline, 5. St Marys, 8. Mabuhay, 9. Snow, 12. Abattoir, 14. Jacko, 16. Donna.

## Guyra man charged with drug offences

A Guyra man has faced court after cannabis worth almost \$180,000 was seized last week. Officers attached to New England Target Action Group attended a home on Baldersleigh Road on April 15th, to speak with a man believed to reside at the location.

During a search of the home officers located and seized 27.3kg cannabis, along with two vials of cannabis oil. The cannabis has an estimated potential street value of \$180,000.

Following further inquiries, officers arrested 53-year-old Roy

James McClure after he handed himself in at Armidale Police Station the following day. He was charged with two counts of possess prohibited drug, supply prohibited drug greater than commercial quantity and cultivate prohibited plant.

He appeared in Tamworth Local Court last week where bail was refused and he will appear in Armidale court later this month to face the charges.

## Helicopter called in

The Westpac Rescue Helicopter was tasked to Guyra last Wednesday for an urgent Inter Hospital Reterival from Guyra Hospital to

the John Hunter Hospital, Newcastle.

The patient was 74 year old female suffering a serious medical condition who was escorted in flight by the Critical Care Medical Team to undergo further specialist treatment at the John Hunter.

## Relief for ratepayers available now

Armidale Regional Council is offering immediate relief to ratepayers experiencing genuine financial hardship due to the Coronavirus pandemic by allowing a three-month payment deferral period and relief to not-for-profit organi-

sations renting property from Council.

The latest rates instalment will be mailed-out to ratepayers next week and members of the community that are struggling financially will have the option to defer payment or enter into a payment plan.

The Interim Hardship Policy is available to view online at [www.armidaleregional.nsw.gov.au/coronavirus](http://www.armidaleregional.nsw.gov.au/coronavirus) Please contact Council's Customer Service Centre on 1300 136 833 or email [council@armidale.nsw.gov.au](mailto:council@armidale.nsw.gov.au) to speak to a Council representative who will help you with your application and discuss your options.



# Classifieds Trades & Services

## MEALS ON WHEELS

23 April	Sue Adams
24 April	Stephen Adams
27 April	Regional Australia Bank Staff
28 April	Pam Hart
29 April	Noreen Williams

## HOME DELIVERIES

To keep our community safe, local businesses will home deliver. Phone your requirements to:

Guyra Pharmacy	6779 1192
Kirk's IGA	6779 1555
Spar	6779 1991
Dasha's Hardware	6779 2444

## CHURCH SERVICES

Guyra and Ben Lomond  
Presbyterian Church

### CHURCH ON WHEELS!

Ring, and we will post a CD of our service for each Sunday.



Rev. Andrew Campbell

0447 724 536

## WHERE'S GAZZA

Find Gazza in this week's edition of the Gazette. Our friendly cockatoo appears three times. There are no prizes just put your detective hats on and enjoy the hunt.



## FOR SALE

**3 PIECE LOUNGE** in good order. \$450.00 ono. Phone 0427 828 293

## FIREWOOD

**MIXED FIREWOOD.** Ute or bogey trailer loads available. Call 0429 302 600

## PUBLIC NOTICES

**GUYRA HISTORICAL MUSEUM** will be CLOSED until further notice. Enquiries: 6779 2132.

## CLAIM THE DATE

**SUNDAY, 8th NOVEMBER: Guyra Cup** (note postponement from 19th April).

## CROSSWORD SOLUTIONS

### Crossword Solution April 8th

**Across:** 1. Odds, 3. Tracking, 9. Egotist, 10. Never, 11. Desks, 12. Opiate, 14. Sac, 16. Where, 17. Spa, 18. Manufacturer, 21. Topaz, 22. Stables, 23. Baddebts, 24. Oral  
**Down:** 1. Overdose, 2. Drops, 4. Rat, 5. Confidential, 6. Invites, 7. Girl, 8. Jigsaw puzzle, 12. Omega, 13. Aerosol, 15. Clapped, 19. Ruler, 20. Stab, 22. Sat

### Crossword solution April 15th

**Across:** 1. Shred, 4. Craving, 8. Era, 9. Amass, 10. Altar, 11. Torrent, 13. Elapse, 15. Sphere, 18. Victorious, 22. Paths, 23. Hyena, 24. Ire, 25. Carpets, 26. Three  
**Down:** 1. Searcher, 2. Roast, 3. Deserts, 4. Caller, 5. Adapt, 6. Interns, 7. Gore, 12. Decorate, 14. Aviator, 16. Prophet, 17. Crisis, 19. Taste, 20. Shear, 21. Epic

## TRADES & SERVICES



All odd jobs. No job too small. Free quotes. Fully insured.

- Painting a speciality
- Carpentry • Tiling • All repairs.

Contact Arthur - 0428 946 446

## ONLINE FITNESS CLASSES \$10 PER WEEK



KEITH ROBINSON  
Personal Trainer

0432 992 812  
KILTMAN.COM.AU

CONTACT KEITH FOR DETAILS  
[kiltmanfitness@gmail.com](mailto:kiltmanfitness@gmail.com)

## Electrical Contractors

Essential Energy Level 2 Contractors

- Reverse Cycle Air/Con AU02230
- Slab Heating • TV Aerial Repairs
- Household & Stock Pumps • Generators

**Commercial** **Industrial**  
**Domestic** **Rural**

**CT Electric** Phone: 6779 1273  
101 Bradley Street, Guyra  
A/H: 6779 1463 or 0427 791 273

# A different day dawns for ANZACs

Dear Guyra Community,

As a Vice-President and a Trustee of the Guyra sub-Branch of the RSL I want to let you know that while we are unable to hold the usual ANZAC Day commemorations this year, this does not mean that we are not able to help you if you need.

We are acutely aware of how difficult these times are for everyone, and on ANZAC Day many of you will feel very isolated. You are used to rising early to attend the Dawn Service and sharing a cuppa with your mates and friends. Some of you then headed to the MPS to share in their beautiful memorial service of the ANZACs. From there you normally would head to Bradley Street to either march or line the street to participate in the memorial to yourselves, or your relatives, husbands, wives, fathers, mothers, uncles, aunts, cousins, sons and daughters.

From there most of you have found your spot outside the cenotaph located at the Guyra War Memorial Hall while the beautiful ANZAC service is conducted with many of you laying wreaths. Over recent years this ceremony has attracted many hundreds of participants. For the War Widows and their families this will be a particularly difficult day - we know you are used to gathering together with other townspeople to honour your husbands



The Soldiers Memorial Hall at dawn in 2018.

Services have been suspended this year due to COVID-19 restrictions

and families and then to enjoy sharing lunch and good company at the Bowling Club.

This day has always included many of the school children from the District. We wish to publicly thank the school community of St Mary of the Angels whose thoughtful cards were forwarded to those in the veteran community who are known to them. I am sure there are many vet-

erans who live with us all and who we do not know have served. We honour you as well.

Last week's Gazette published the options you have for commemorating ANZAC Day 2020. The Australian Flag will be flown at the Cenotaph but no services will be conducted there. You might like to join with millions of other Australians who plan to "Light up the Dawn"

from the end of their driveways at 6am. Please know we are here to help you. An easy start to seeking help is to drop in to GALA and ask to be put in touch with the Guyra sub-Branch. You do not have to do life on your own but we cannot help if we do not know you need us!

We look forward to healthier and shared times for everyone.

*Chris Hietbrink*

## History of the Soldiers Memorial Hall

In Mr Helyar's 'Australia Tea Rooms' a meeting was held on Wednesday, 30th July 1919 to form a sub-branch of the Returned Soldiers and Sailors Imperial League of Australia. The League's organiser, Mr Yeates was present to address the meeting.

Lieut. Col. H.F. White occupied the chair and about twenty returned servicemen decided to form an RSL branch. Councillor Dutton placed the Shire Chambers at

the branch's disposal for their meetings until a club room was established.

A public meeting was held on 6th September 1919 to discuss a war memorial for those who served in the Great War 1914-1918. The President of the Shire, Mr L.P. Dutton presided. The meeting agreed to construct a building to house a library, recreational facilities and a meeting place for returned servicemen and women.

The move for such a memorial resulted from the work of the Red Cross and Women War Workers Association. The Red Cross promised £200 (Pounds) towards the memorial. The movement was generously supported and within a short time a large sum of money was in hand.

On 6th March 1920 Armidale architect, Mr W.H. Lee, was instructed to submit plans and specifications for the building. Tenders were called

in May 1920 and let to the Inverell builder, B.M Wade for a cost of £2297/10/- on 26th June 1920.

The Foundation Stone was laid by Lieut. Col. H.F White DSO CMG on 16th October 1920 and the contract was completed in March 1921. The Memorial was officially opened on Saturday, 29th October 1921 by Lieutenant Colonel H.F. White. Between four to five hundred people attended the function.